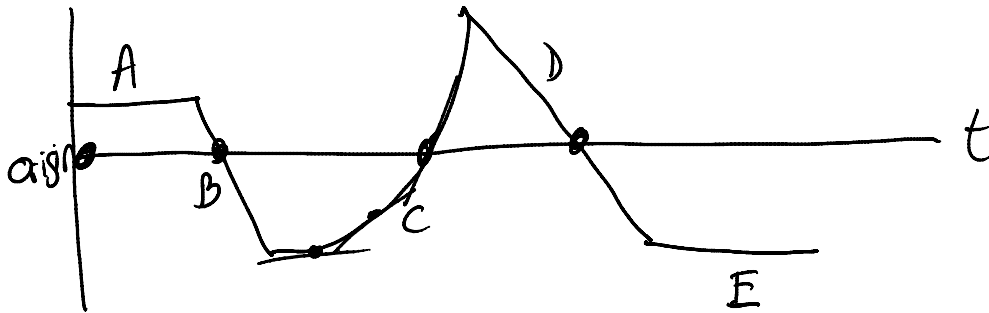


Lesson 6 in your w/B interpreting graphs

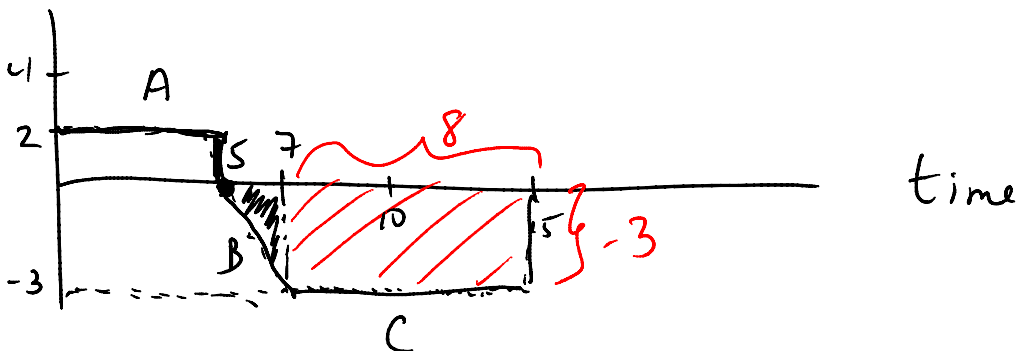
typical unit test Q's

given position-time graph



- Q1) Which line segment is east of the origin = A
- 2) Which line segment is west of the origin = E
- 3) What is the acceleration of line D = "0" since it is constant velocity
- 4) Which segment has ⊕'ve acceleration
- 5) How often did we reach the origin 3 times

Velocity-time graphs



a) ... did T travel in line segment A and in what

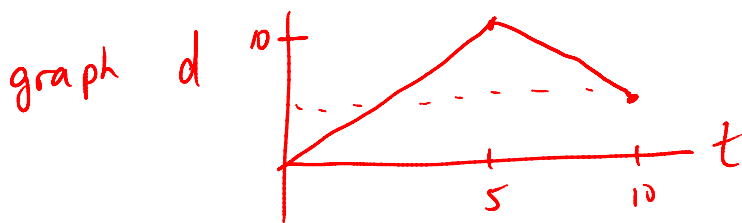
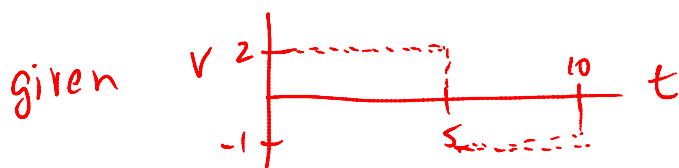
Q1) how far did I travel in line segment A and in what direction  
 $d = v \cdot t = 10 \text{ m E}$

2) how far did I travel between 5, 7 seconds  
 Area of  $\Delta = \frac{1}{2}bh = \frac{1}{2}(2)(-3) = 3 \text{ m west}$

3) what is my position after 7 seconds  $7 \text{ m E}$

4) Find my final position after 15s  
 $= 17 \text{ m W}$

5) what is the acceleration of line A  $0$



w/s  $1.1 - 100$



